

METRIC NEWSLETTER

For Metrology Professionals



Yo tengo OpenMETRIC

Published By Diversified Data Systems, Inc.
Tucson, Arizona

Volume 16, Number 1

www.dds-inc.com

July, 2002

Check Us Out at NCSLI



Check out our booth (#900) at the NCSLI Conference in San Diego, August 4-8.

Don Wyatt, founder and President of Diversified Data Systems, and **Dawn Madison**, Manager of Production Support, will be available to explain our

industry-leading solutions for calibration, equipment, property, and asset management.

We will be featuring **OpenMETRIC**, "*The Next Generation Calibration Management System*" (see related articles on pages 2-3), including an informative "slide show" as well as "live" versions of **OpenMETRIC**, **OpenPROTRAK**, and **OpenEMBARC**.

For those customers and prospects that are looking for economical **alternatives to Microsoft**, Don and Dawn will be demonstrating OpenMETRIC's powerful web and network features using a **Linux** server, **Apache** web server, and **Eudora** mail server (see related articles).

We are honored and delighted that in adjacent booths 901, 902, and 903, our strategic partners and good friends **Charlie Motzko** (NCSLI President), **Dr. Klaus Jaeger** (NCSLI Past President), and **Dr. Howard Castrup** will be sharing expertise, products, and services of vital interest to all metrologists. Don't miss your chance to benefit from the experience of these past and present NCSLI presidents!

If you will be attending the NCSLI Conference, plan to visit our booth.

Looking forward to seeing you in San Diego!

New WonderWare "Power Tools"

We are excited to announce three new WonderWare "Power Tools" that enhance and simplify deployment of OpenMETRIC, OpenPROTRAK, and OpenEMBARC over networks, including the Internet.

WonderConnect allows application processing to be divided between multiple machines for optimal performance. Batch functions, such as reports and global updates, can be offloaded from the client to the server, reducing network traffic and improving performance. **WonderConnect** allows individual functions to be executed on the most effective platform, rather than settling for a fixed choice between "fat" and "thin" client/server.

WonderLaunch (server component), together with **WonderThin** (client component), allows true thin client deployment of our applications. All application processing is performed by the server and only the screen displays are passed back and forth to the client. The interface between **WonderLaunch** and **WonderThin** uses TCP/IP to simplify access availability across most networks, including the Internet.

New OpenMETRIC Web Modules

Using **WonderConnect**, we have developed three new browser-accessible modules that allow users to inquire and report information from **OpenMETRIC's** database.

Using **WonderLaunch** and **WonderThin**, we have developed the ability for a user to launch and execute **OpenMETRIC** from a browser.

These new capabilities will be demonstrated at NCSLI in San Diego!

(See related articles on pages 2-3.)

Network Deployment Choices...

...by Don Wyatt



Most of our clients deploy OpenMETRIC on some form of network. Some use simple LAN's while others use complex WAN's. Many of our clients will be using Internet-based global networks in the foreseeable future.

We are excited to announce the immediate availability of new WonderWare "Power Tools" which facilitate distributed processing as well as true thin client choices for OpenMETRIC deployment.

Using these new tools, we have developed three powerful, browser-accessible inquiry and report capabilities, as well as the ability to launch and execute OpenMETRIC directly from a browser.

Thin client deployment generally reduces the cost and complexity of application administration, including the deployment of updates and upgrades.

Browser-based access to OpenMETRIC information will dramatically benefit equipment users and coordinators who need to know the status of items being serviced.

Browser-based access to OpenMETRIC will allow customers or equipment users to update the OpenMETRIC database with changes in status, location, ownership, contacts, or other customer-maintained information.

Browser-based access to OpenMETRIC is an ideal approach for allowing equipment users to submit service requests or instructions.

Browser-based access to OpenMETRIC's database allows equipment users to rely on electronic access to information, such as calibration certificates, rather than maintaining paper records.

When browser-based applications are coupled with browser-based training (stay tuned for exciting announcements in this area soon), applications can be readily deployed throughout an enterprise and commercial service providers can dramatically improve their service and support.

We are committed to developing technology infrastructure to support tomorrow's applications. These new modules add powerful new choices for our clients and ensure that OpenMETRIC continues to stay "ahead of the pack."

**OpenMETRIC...Where the Choice is Yours...
Today!**

New in OpenMETRIC Version 5.0

OpenMETRIC Version 5.0 is scheduled to be released on September 5, 2002. OpenMETRIC Version 5.0 contains some exciting new functionality, including our new OpenMETRIC Web Modules, and our new ability to run within a Thin Client network environment.

REMEMBER: These new OpenMETRIC Web Modules will be available for demonstration at NCSLI in San Diego! Allow Don Wyatt or Dawn Madison to show you these features and answer your questions.

OpenMETRIC Web Modules

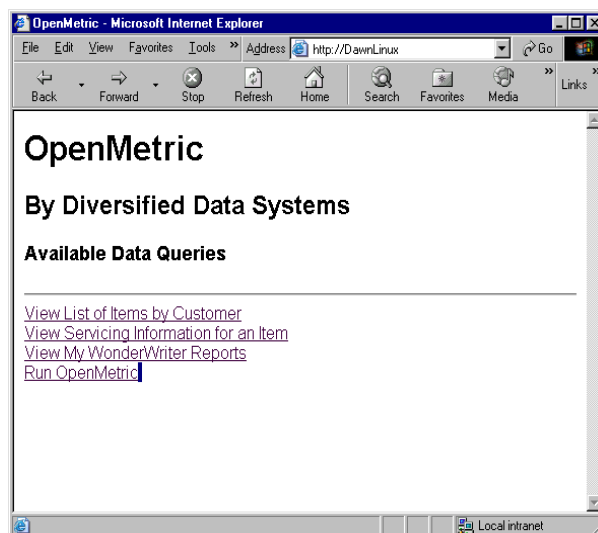
OpenMETRIC now supports a set of functions that allows users to view data from browsers over networks, including the Internet. With a Web Server and TCP/IP network connections to your OpenMETRIC software and data, you can allow your customers or employees to:

- View a List of Items which belong to an Owning or Using Customer
- View Servicing Information for an Item
- Select and Execute a pre-defined WonderWriter report, and receive the results via Email

OpenMETRIC Web Page

The OpenMETRIC Web Modules are CGI programs that use HTML templates. We can modify or expand these queries, changing the data you wish to display as well as the colors, fonts, logos, and styles. These queries can be added to your own web page(s).

The following web page displays links to the new OpenMETRIC Web Modules.



OpenMETRIC Web Modules (continued)

View List of Items by Customer

When the user clicks on this link, the following screen appears. The user enters a Customer ID, chooses Using or Owning customer, and presses the Submit button.

The system returns a list of items based on the Owning or Using customer. The user can page through records in the list with or without filters for Item, Mfr, Model, and Status. Or, the user can have the entire filtered/unfiltered list emailed as a text attachment.

Your Selections					
Item	Mfr	Model	Status	Nomenclature	Due Date
0100	FLUKE	77	ACTIV	MULTIMETER, DIG. HAND	*10/31/2001
0101	FLUKE	77	ACTIV	MULTIMETER, DIG. HAND	10/10/2002
0102	FLUKE	77	CBU	MULTIMETER, DIG. HAND	12/12/2002
0103	FLUKE	77	CBU	MULTIMETER, DIG. HAND	07/31/2002
0200	FLUKE	5500A	ACTIV	CALIBRATOR	10/31/2002
0201	FLUKE	5500A	ACTIV	CALIBRATOR	09/15/2002
0202	FLUKE	5500A	ACTIV	CALIBRATOR	10/10/2004
0203	FLUKE	5500A	CBU	CALIBRATOR	12/31/2002

* Asterisk in front of Due Date indicates the item is currently in tracking.

View Servicing Information for an Item

When the user clicks on this link, a data selection screen appears. The user enters a Customer ID and an item ID and then presses the Submit button.

The system displays tracking summary information for the item. The user can then view other servicing information, such as Cal, Repair, PM, and Other servicing records.

Item Information			
Nomenclature	MULTIMETER, DIG. HAND		
Mfr/Model	FLUKE	77	
Track Status/Desc	RECV	Received	
Job Num/Serial Num	0000000151	001020304	
Progress Summary			
Action	Date	Time	By
Open	07/01/2002	14:46:01.00	Dawn
Assign	07/01/2002	14:46:47.00	007
To Vendor	N/A	N/A	N/A
Cal Begin	07/01/2002	14:46:47.00	Dawn
Cal Done			
Repair Begin	07/01/2002	14:47:05.00	Dawn
Repair Done			

Open	07/01/2002	14:46:01.00	Dawn
Assign	07/01/2002	14:46:47.00	007
To Vendor	N/A	N/A	N/A
Cal Begin	07/01/2002	14:46:47.00	Dawn
Cal Done			
Repair Begin	07/01/2002	14:47:05.00	Dawn
Repair Done			
PM Begin			
PM Done			
Other Begin			
Other Done			
From Vendor	N/A	N/A	N/A
Cal Approve			

Tracking Service Codes Trk Status Log Comments

Cal Repair PM Other

Re-Enter Item and Customer
Return to Query List

View My WonderWriter Reports

When the user clicks on this link, a data selection screen appears. The user can enter filter information if needed, and press the Submit button.

The system presents a list of WonderWriter reports that are available to this user. The user can page through the list with/without filters, or the user can have the list of available reports emailed as an attachment. The user can also choose to have the system run a report and return the results via email.

Run OpenMETRIC (Thin Client)

This link will execute OpenMETRIC as a Thin Client. Logic and file processing is done on a server, but the user interface processing is done on the user's Windows desktop. The server can be Windows NT/2000, Unix or Linux. The client/server modules operate using TCP/IP, so OpenMETRIC in thin client mode can run on the Internet and TCP/IP-based WANs and LANs.

DIVERSIFIED DATA SYSTEMS -- "THIRTY-TWO YEARS OF TRAILBLAZING"



We at Diversified Data Systems, Inc. (DDS) are proud of our dramatic achievements and enduring contributions to the development and evolution of the computer industry.

For a **third of a century**, DDS has developed major software products and pioneered new technologies to harness the power and potential of computers for business, industry, manufacturing, health care, education, government, distribution, finance, and public safety.

In the early 70's, DDS gained worldwide recognition by producing language compilers, database management systems, multi-tasking operating systems, and other products for 16-bit and 32-bit minicomputers.

During the 70's and early 80's, DDS made major contributions to the development and refinement of Computer-Aided Software Engineering (CASE) concepts and methodologies.

In the late 80's, DDS developed a Computer-Aided Software Production (CASP) system named WonderWare.

During the 90's, DDS developed numerous WonderWare "Power Tools" which ensure that our products remain at the "cutting edge" of technology.

Our extraordinary longevity provides us a unique perspective from which to evaluate, select, and deploy the technologies that are best for our products and clients.

Our products are well ahead of competitive offerings. Each year, the technological distance between us and the "rest of the pack" continues to widen.

Our flagship product, **OpenMETRIC**, is the most mature, most robust, and most flexible enterprise-level Metrology Management System currently available. OpenMETRIC is fully integrated with **OpenPROTRAK** for Property Management and **OpenEMBARC** for managing Equipment "Pools". Together these products offer unmatched power and capability for equipment and asset management.

To ensure your success, we offer complete solutions, including software, data conversion, training, and support.

As computers, operating systems, standards, languages, databases, networks, human interfaces, external system interfaces, and digital appliances continue to emerge and evolve, our clients will continue to reap the rewards of our longevity and our technical superiority.

If you're looking for a solution that will remain successful and "state of the art" 15 or 20 years from now, then you should select one of our OpenTechnology systems.

**Diversified Data Systems, Inc.
2601 N. Fairview Ave.
Tucson, AZ 85705**

We've got lots to talk about at NCSLI in San Diego!